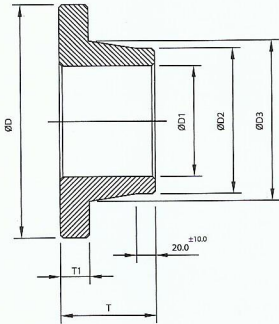


LONG NECK PIPE END



AVAILABLE M.O.C.:

PP (POLYPROPYLENE)
 HDPE (HIGH DENSITY POLYETHYLENE)
 ISOTACTIC PP
 PVDF (POLYVINYLIDENE FLUORIDE)

ALL DIMENSIONS ARE IN MM (±2 MM)

SIZE IN.	MM.	Ø D	Ø D1	Ø D2	Ø D3	T	T1
½ "	20	52.0	14.0	21.0	25.5	37.0	10.0
¾ "	25	61.0	18.0	25.5	29.0	37.5	11.0
1 "	32	65.5	23.5	32.5	36.0	51.0	12.0
1 ¼ "	40	71.0	27.0	40.0	44.0	50.0	12.0
1 ½ "	50	75.0	39.0	50.0	53.0	48.5	11.5
2 "	63	95.0	47.5	63.0	66.0	50.0	12.5
2 ½ "	75	105.0	56.0	75.5	78.5	49.0	14.0
3 "	90	122.0	68.5	90.0	94.0	78.5	18.0
4 "	110	155.0	84.0	110.0	116.0	79.5	20.0
5 "	125	188.0	97.5	126.0	132.0	78.0	19.0
5 ¼ "	140	195.0	113.0	140.5	147.0	78.0	22.5
6 "	160	211.0	128.0	160.0	165.0	80.0	25.0
7 "	180	228.0	148.0	181.0	184.5	81.0	28.0
8 "	200	241.0	167.0	200.0	207.0	79.0	23.0
9 "	225	273.5	191.0	225.0	231.5	79.0	32.5
10 "	250	294.0	209.0	248.5	250.0	79.5	31.0
11 "	280	325.0	216.0	280.0	285.0	94.5	31.0
12 "	315	373.0	255.0	314.5	317.0	94.5	31.0
14 "	355	433.0	302.0	355.0	369.0	98.0	50.0
16 "	400	490.0	338.0	400.0	418.0	97.0	48.0
18 "	450	536.0	380.0	450.0	466.0	97.0	50.0
20 "	500	598.0	420.0	500.0	526.0	95.0	48.0
22 "	560	697.0	487.0	559.0	593.0	98.0	50.0
24 "	630	705.0	547.0	630.0	640.0	98.0	50.0

AS PER IS : 8008 - 1976 (PART VI)
 MAX. WORKING PRESSURE 10kg / cm²

EXTRA LONG PIPE END - Tail Piece

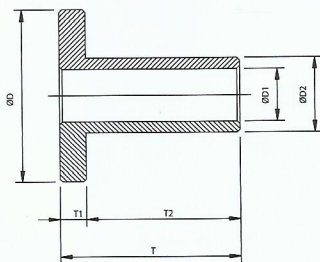
AVAILABLE M.O.C.:

PP (POLYPROPYLENE)
 HDPE (HIGH DENSITY POLYETHYLENE)

ALL DIMENSIONS ARE IN MM (±2 MM)

SIZE IN.	MM.	Ø D	Ø D1	Ø D2	T	T1	T2
1 "	25	65	25	32	182	16	166
1 ¼ "	32	72	32	40	181	20	161
1 ½ "	40	80	38	50	181	20	161
2 "	50	96	50	63	181	20	161
2 ½ "	65	105	55	75	201	25	176
3 "	80	125	74	90	181	21	160
4 "	100	155	86	110	181	21	160
6 "	150	214	124	160	172	21	151

MAX. WORKING PRESSURE 10kg / cm²



Note :

We will also provide in M.O.C.: PVDF/PP-H
 & P.P.C.P. Natural, for details & Prices Contact us.

